

# WHATCHA SEE IS WHATCHA GET

JOHN SCOFIELD - 'UP ALL NIGHT' 2003

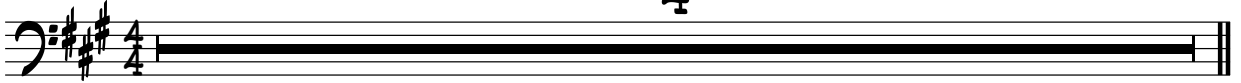
AS PLAYED BY: ANDY HESS

TRANSCRIBED BY: LINDSAY BEACH

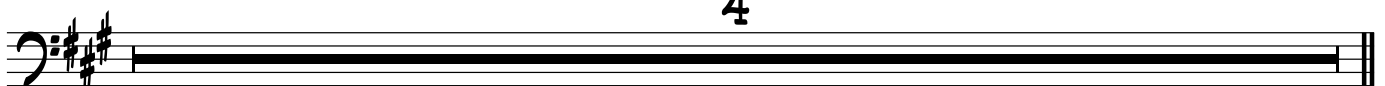
SWUNG 16THS ♩=91

4

BASS GUITAR



4



The image displays ten staves of musical notation, all in bass clef and a key signature of two sharps (F# and C#). The notation is complex, featuring a variety of rhythmic patterns, including eighth and sixteenth notes, rests, and slurs. There are several instances of accidentals, such as naturals and sharps, and some notes are marked with an 'x' above them. The staves are connected by a vertical line on the left side. The overall style is that of a contemporary musical score, possibly for a solo instrument or a specific voice part.



