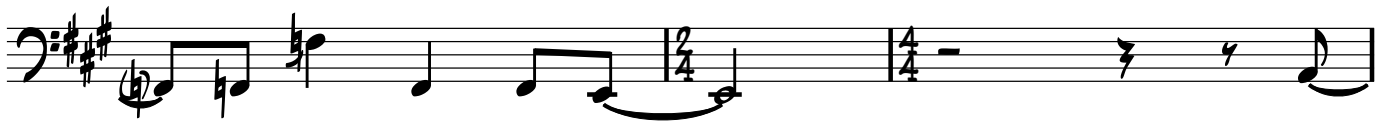




Bass guitar sheet music for page 2, featuring ten staves of music in G major (one sharp). The music includes various time signatures: 3/4, 4/4, 2/4, and 3/4. The notation includes eighth notes, quarter notes, and sixteenth notes, with some measures containing rests. The piece concludes with a double bar line.

PLAY 4 TIMES

PALM MUTE W/THUMB



PLAY 3 TIMES



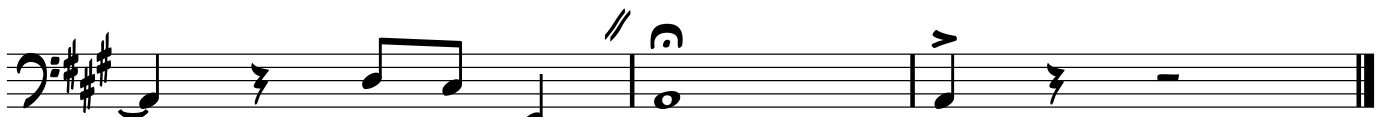
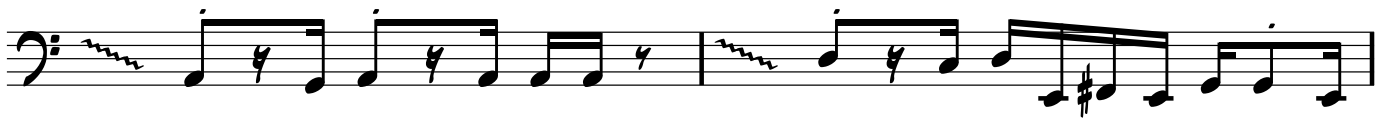
SLAP

The 'SLAP' section consists of ten staves of music. Each staff begins with a bass clef and a 4/4 time signature. The music is characterized by a consistent rhythmic pattern of eighth notes, often with an 'x' above the notehead to indicate a slap. The key signature changes from one sharp (F#) to two sharps (F# and C#) in the second staff, and then to three sharps (F#, C#, and G#) in the third staff. The notation includes various rhythmic values such as eighth notes, quarter notes, and eighth rests, along with slurs and accents.

FINGERS

The 'FINGERS' section consists of a single staff of music. It begins with a bass clef and a 4/4 time signature. The music features a steady eighth-note rhythm throughout the staff, with a key signature of two sharps (F# and C#).





RIT. . .