

# OUT OF THE BLUE

MAYSA - 'OUT OF THE BLUE' 1998

SWUNG 16THS

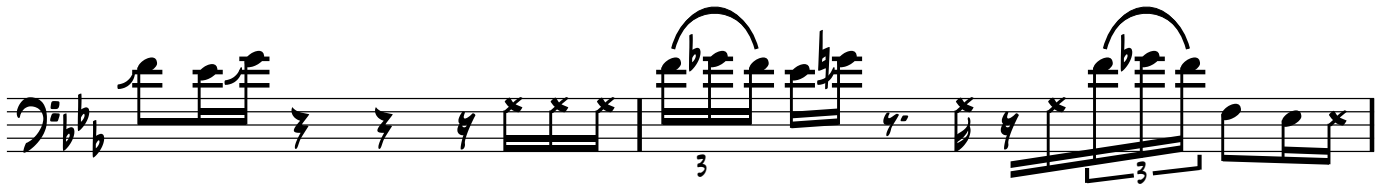
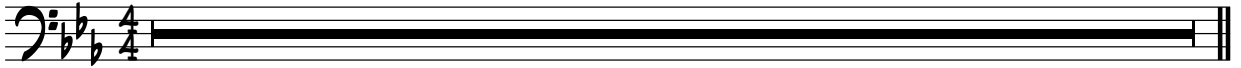
♩ = 82

AS PLAYED BY: ALEX AL

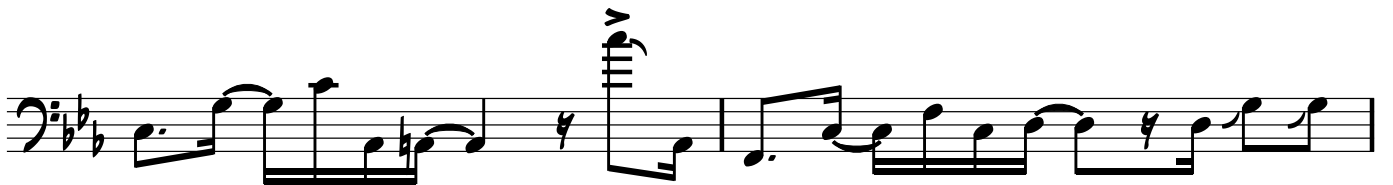
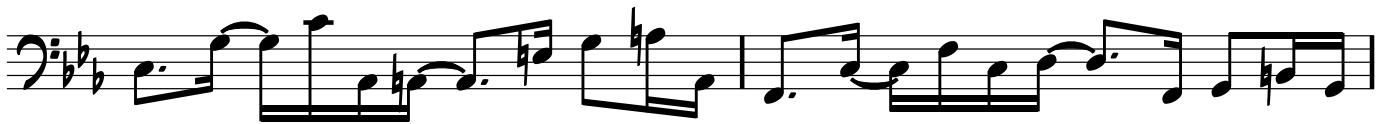
TRANSCRIBED BY: LINDSAY BEACH

4

BASS GUITAR

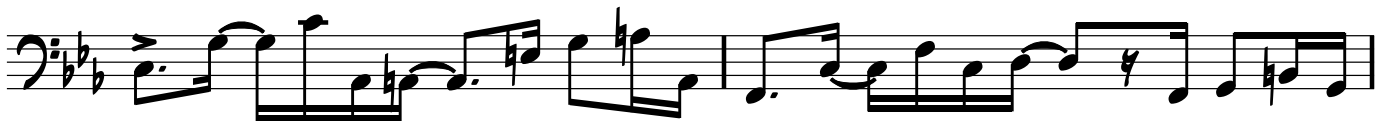
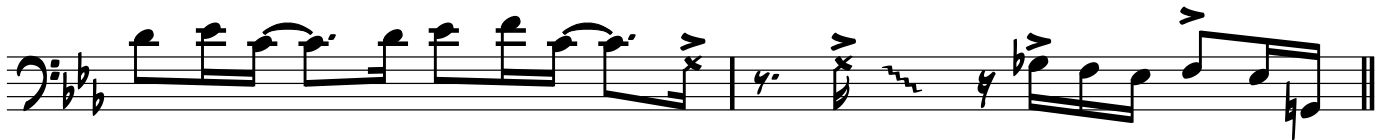


The image displays a single page of musical notation, page 2, for a bass line. It consists of 11 staves of music. The key signature is three flats (B-flat, E-flat, A-flat), and the time signature is common time (C). The notation is primarily composed of eighth and sixteenth notes, often beamed together. There are several rests throughout the piece. Dynamic markings include accents (>) and a star symbol (\*). The music concludes with a double bar line and a wavy line indicating the end of the line.





3



FADE.....