

NEW LOVE

JEFFREY OSBORNE - "JEFFREY OSBORNE" 1982

♩ = 99

AS PLAYED BY: LOUIS JOHNSON

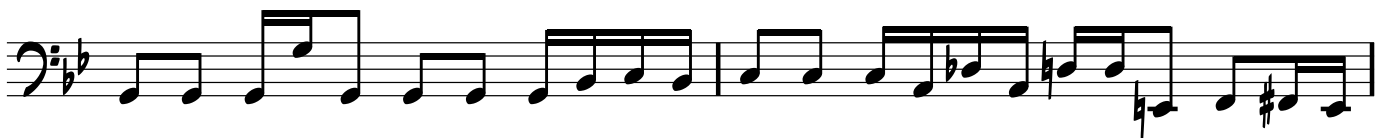
SWUNG 16THS

TRANSCRIBED BY: LINDSAY BEACH

BASS GUITAR

The sheet music is written for bass guitar in a 4/4 time signature with a key signature of two flats (Bb and Eb). The tempo is marked as 99 beats per minute. The piece is in a swung 16th style. The notation consists of seven staves of music. The first staff begins with a treble clef, a key signature of two flats, and a 4/4 time signature. It starts with a quarter rest followed by a quarter note G2, then a series of eighth and sixteenth notes. The music features a mix of eighth and sixteenth notes, often beamed together, with some notes marked with accents. The piece concludes with a double bar line.







FADE.....

