

# LOWDOWN

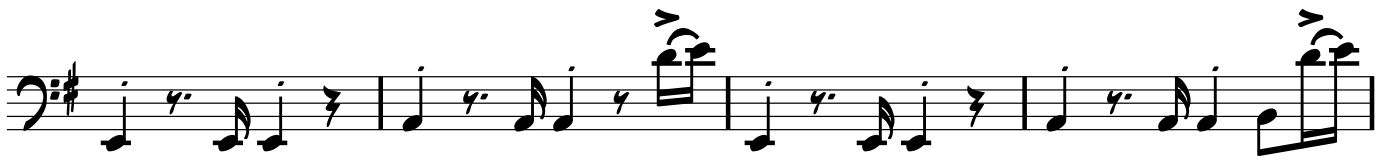
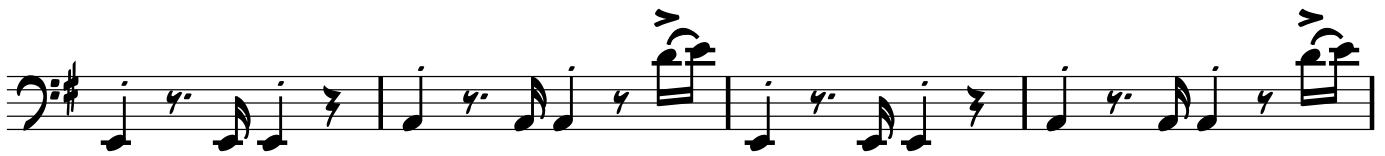

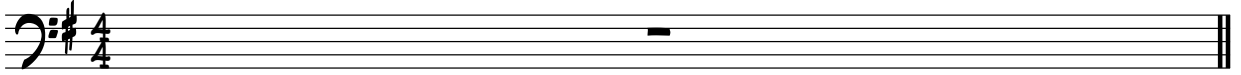
INCOGNITO - 'LIVE IN LONDON 35TH ANNIVERSARY SHOW' 2015

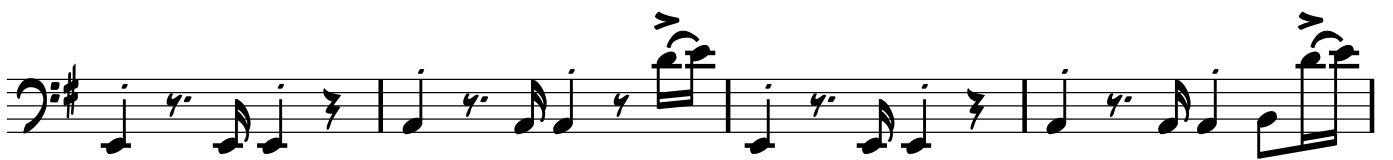
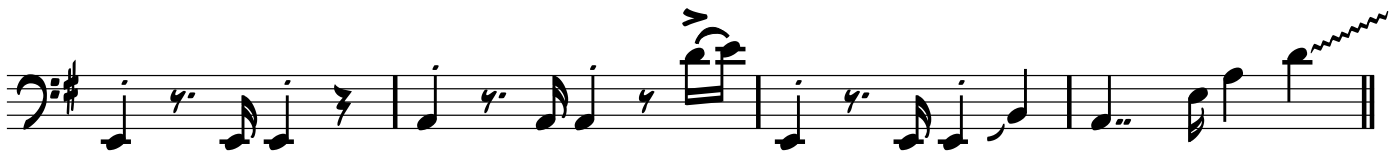
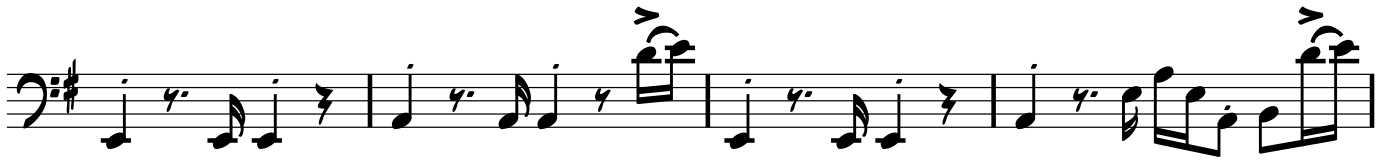
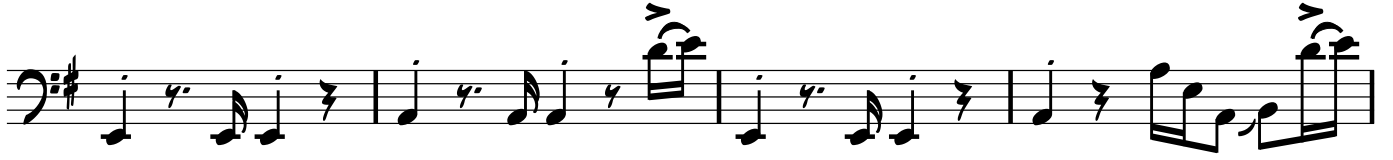
AS PLAYED BY: FRANCIS HYLTON

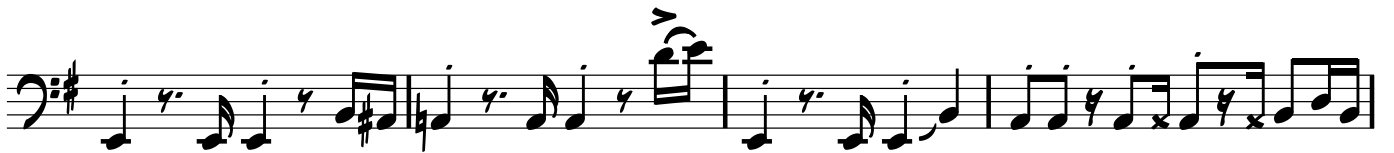
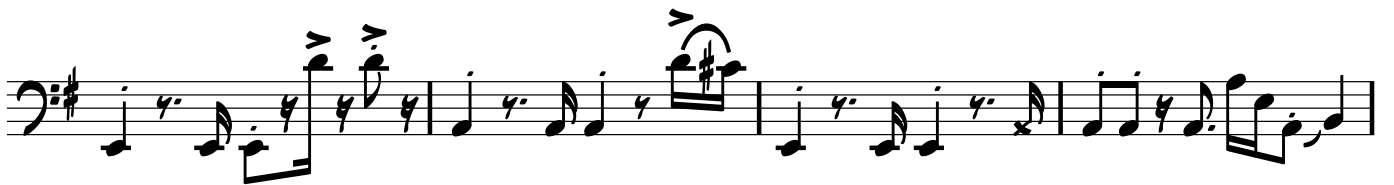
TRANSCRIBED BY: LINDSAY BEACH

♩ = 115

BASS GUITAR







The image displays a musical score for a bass clef instrument in G major (one sharp) and 4/4 time. The score consists of 11 staves of music. The first staff begins with a treble clef and a key signature of one sharp (F#), which is then changed to a bass clef. The music features a variety of rhythmic patterns, including eighth and sixteenth notes, and rests. There are several accidentals, including naturals and sharps. Performance markings include a 'v' (accent) above a note in the 10th staff and a 'RIT.....' (ritardando) marking at the end of the 10th staff. The score concludes with a double bar line and a final chord in the 11th staff.