

KEEP AWAY GIRLS

STEPHANIE MILLS - 'TANTALIZINGLY HOT' 1982

♩ = 68

SLAP
SWUNG 16THS

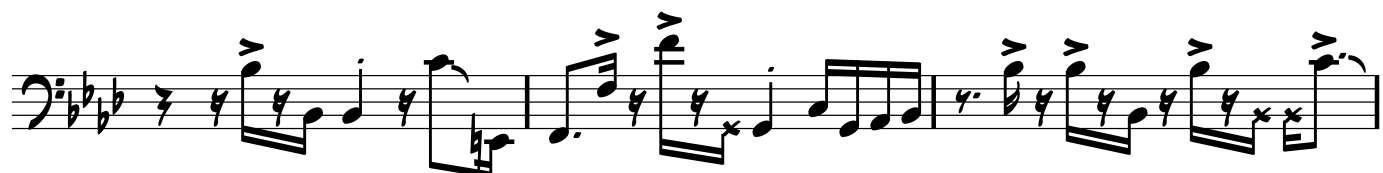
AS PLAYED BY: FRANCISCO CENTENO

TRANSCRIBED BY: LINDSAY BEACH

BASS GUITAR

The sheet music is written for bass guitar in a 4/4 time signature with a key signature of three flats (B-flat, E-flat, A-flat). The tempo is marked as quarter note = 68. The music is characterized by a 'slap' technique and 'swung 16ths'. The notation includes various rhythmic values such as eighth notes, sixteenth notes, and dotted rhythms, along with slurs and accents. The piece concludes with a double bar line.

The image displays ten staves of musical notation, all in bass clef. The key signature consists of three flats (B-flat, E-flat, and A-flat), and the time signature is 4/4. The notation includes various rhythmic values such as quarter notes, eighth notes, and sixteenth notes, often grouped with beams. Accents (v) are placed above many notes. Some notes are marked with an 'x' below them. The music is organized into measures by vertical bar lines, with some measures containing repeat signs. The notation is clean and professional, typical of a music manuscript.



First musical staff in bass clef with key signature of three flats (B-flat, E-flat, A-flat). It contains two measures of music. The first measure has a quarter note followed by an eighth-note triplet. The second measure has a quarter rest followed by a quarter note, a quarter note, and a quarter note.

Second musical staff in bass clef with key signature of three flats. It contains two measures of music. The first measure has a quarter note followed by an eighth-note triplet. The second measure has a quarter rest followed by a quarter note, a quarter note, and a quarter note.

Third musical staff in bass clef with key signature of three flats. It contains two measures of music. The first measure has a quarter note followed by an eighth-note triplet. The second measure has a quarter rest followed by a quarter note, a quarter note, and a quarter note.

Fourth musical staff in bass clef with key signature of three flats. It contains two measures of music. The first measure has a quarter note followed by an eighth-note triplet. The second measure has a quarter rest followed by a quarter note, a quarter note, and a quarter note.

Fifth musical staff in bass clef with key signature of three flats. It contains two measures of music. The first measure has a quarter note followed by an eighth-note triplet. The second measure has a quarter rest followed by a quarter note, a quarter note, and a quarter note.

Sixth musical staff in bass clef with key signature of three flats. It contains two measures of music. The first measure has a quarter note followed by an eighth-note triplet. The second measure has a quarter rest followed by a quarter note, a quarter note, and a quarter note.

Seventh musical staff in bass clef with key signature of three flats. It contains two measures of music. The first measure has a quarter note followed by an eighth-note triplet. The second measure has a quarter rest followed by a quarter note, a quarter note, and a quarter note.

FADE.....

Eighth musical staff in bass clef with key signature of three flats. It contains two measures of music. The first measure has a quarter note followed by an eighth-note triplet. The second measure has a quarter rest followed by a quarter note, a quarter note, and a quarter note.